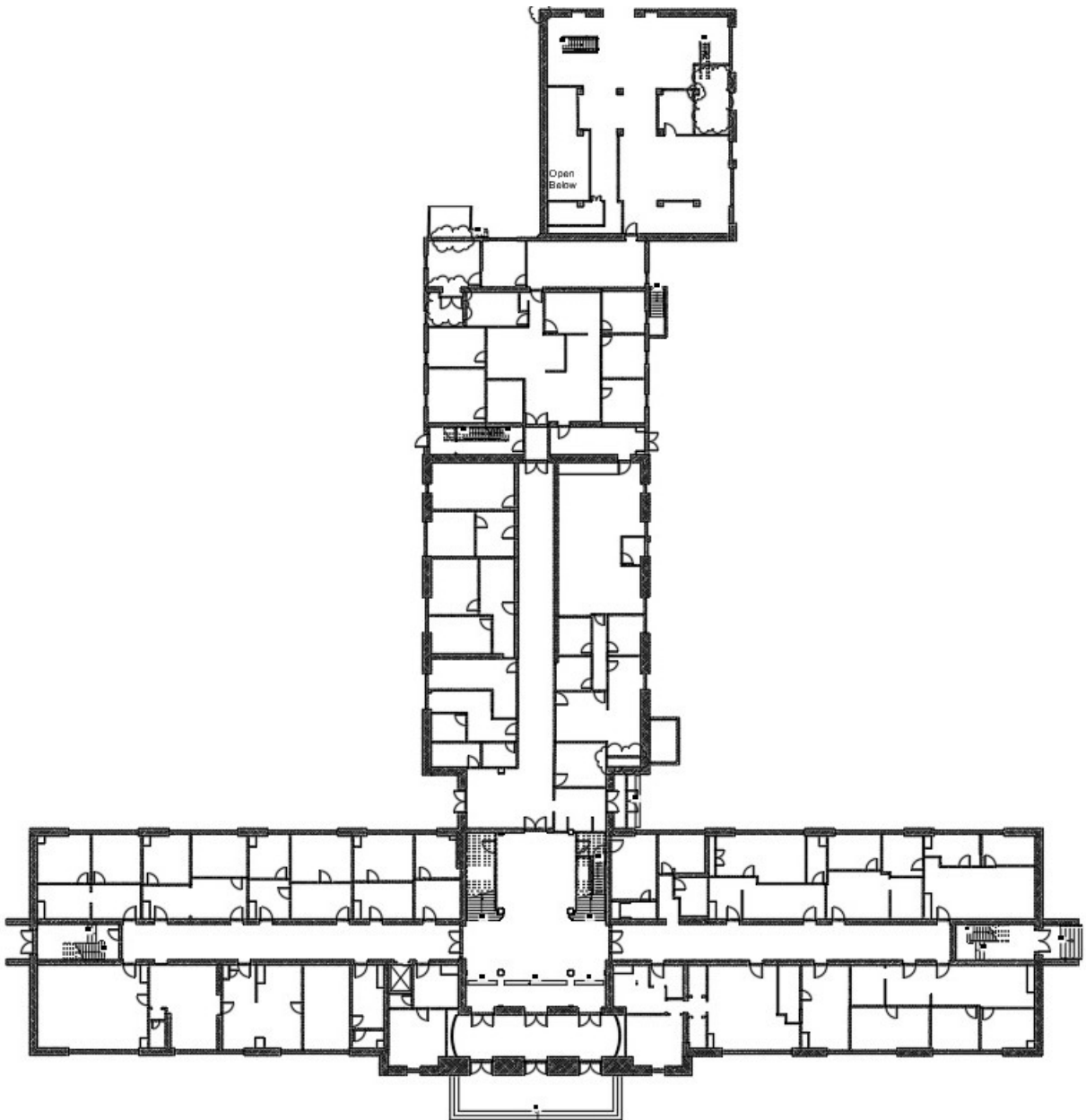




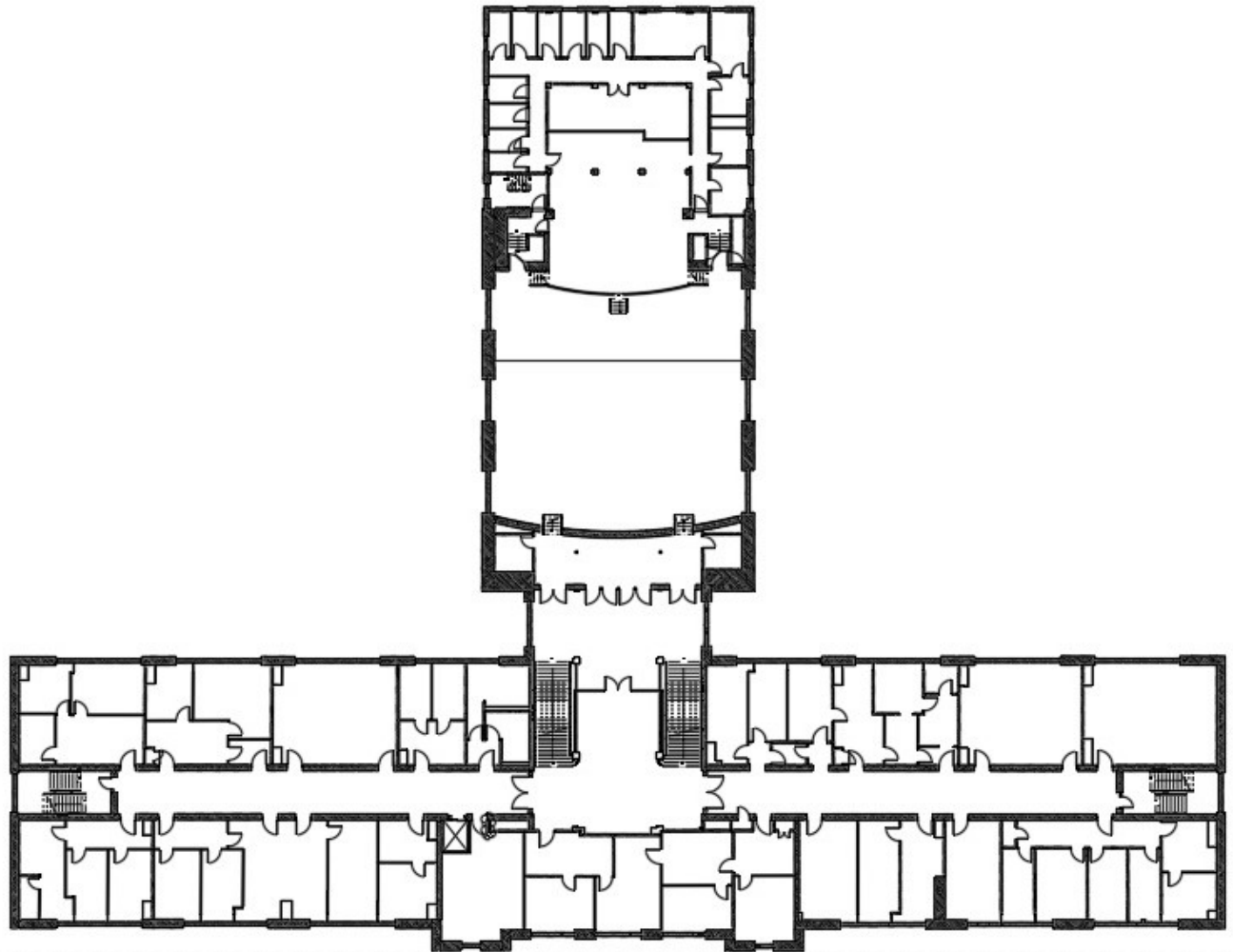
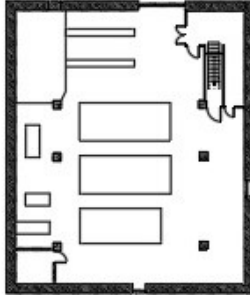
[www.gpassociates.org](http://www.gpassociates.org)

Below shows typical school 2d Revit floor and AutoCAD elevation plans.



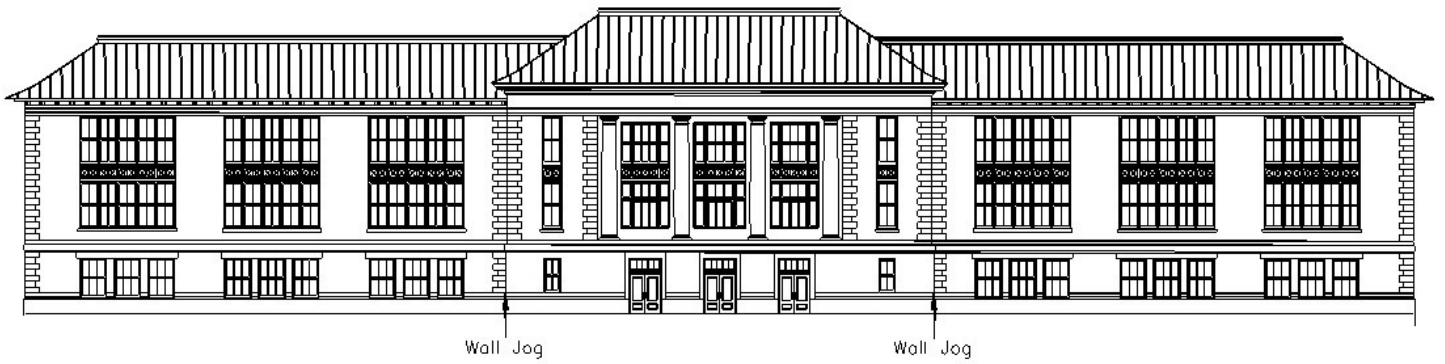


[www.gpassociates.org](http://www.gpassociates.org)



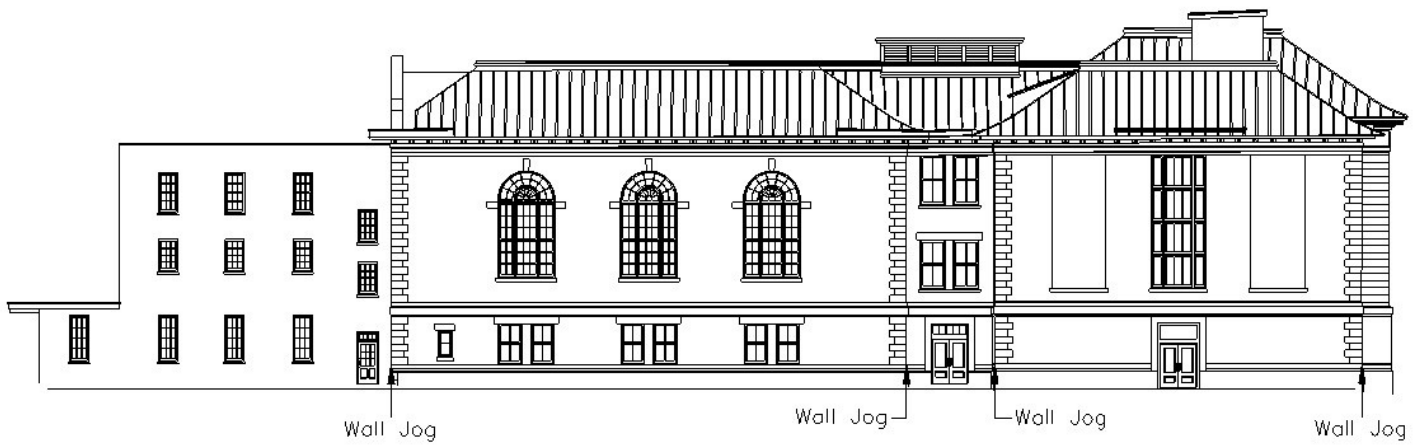


[www.gpassociates.org](http://www.gpassociates.org)



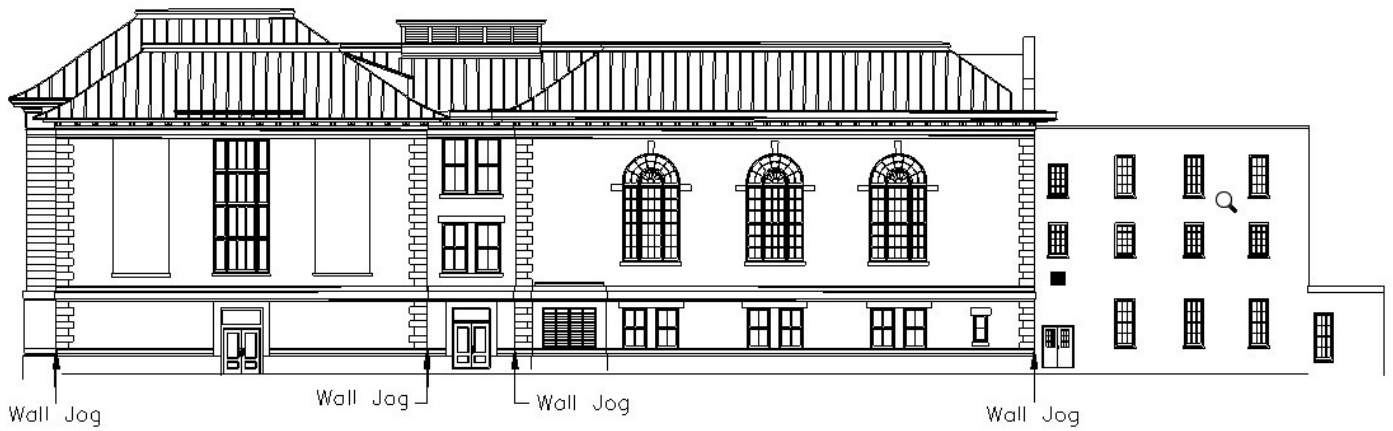


[www.gpassociates.org](http://www.gpassociates.org)





[www.gpassociates.org](http://www.gpassociates.org)





[www.gpassociates.org](http://www.gpassociates.org)

